

the FRINGE BENEFIT

Volume 1

A PRESCOTT VALLEY, INCORPORATED PUBLICATION

No. 9



One of the newer additions to our fine community is the PRESCOTT VALLEY BIBLE CHAPEL, conducting services each Sunday at the Prescott Valley Community Building. Reverend Robert Cooley officiates.

SUNDAY SCHOOL CLASS

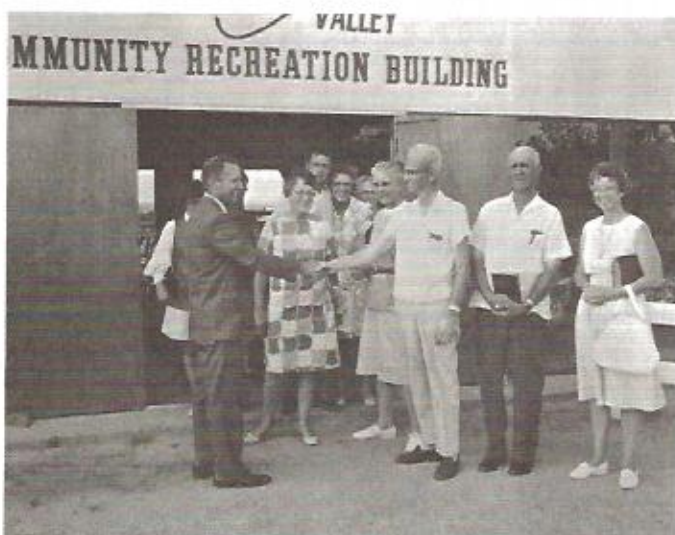
2:30 - 3:00 P.M.

CHURCH SERVICES

3:15 - 4:00 P.M.

The Prescott Valley Bible Chapel is a vitally inspiring addition to our development.

We encourage your attendance, and sincerely thank Reverend Cooley for his assistance in establishing this place of worship for all interested members of our fine Prescott Valley family.





BELATED PRESENTATION - Accepting the Yavapai Title Trophy, symbolic of Prescott Babe Ruth championship, are members of the winning Prescott Valley, Inc. organization and other interested parties. At left, Norb Wedepohl, Yavapai Title executive, is all set to hand

out the award. Others, from left are, Bob Loos, president of Prescott Valley, Inc.; Len Hoffman, chairman of the PV board; M.W. Alexander, PV project manager; and Earl Knight, manager of the champion Babe Ruth baseball team. (Courier Photo by Charles Comfort).

ARIZONA



PUBLIC SERVICE COMPANY

P. O. BOX 391 • PRESCOTT, ARIZONA 86301

On behalf of Dick Cole, myself and all of the kids, I would like to take this opportunity to thank you for sponsoring our baseball team these last two years. We have enjoyed every minute of it and you have done so many things which are not done by any of the other sponsors which made each and every boy proud to play on our team.

Sincerely,

Earl Knight
Right of Way Agent

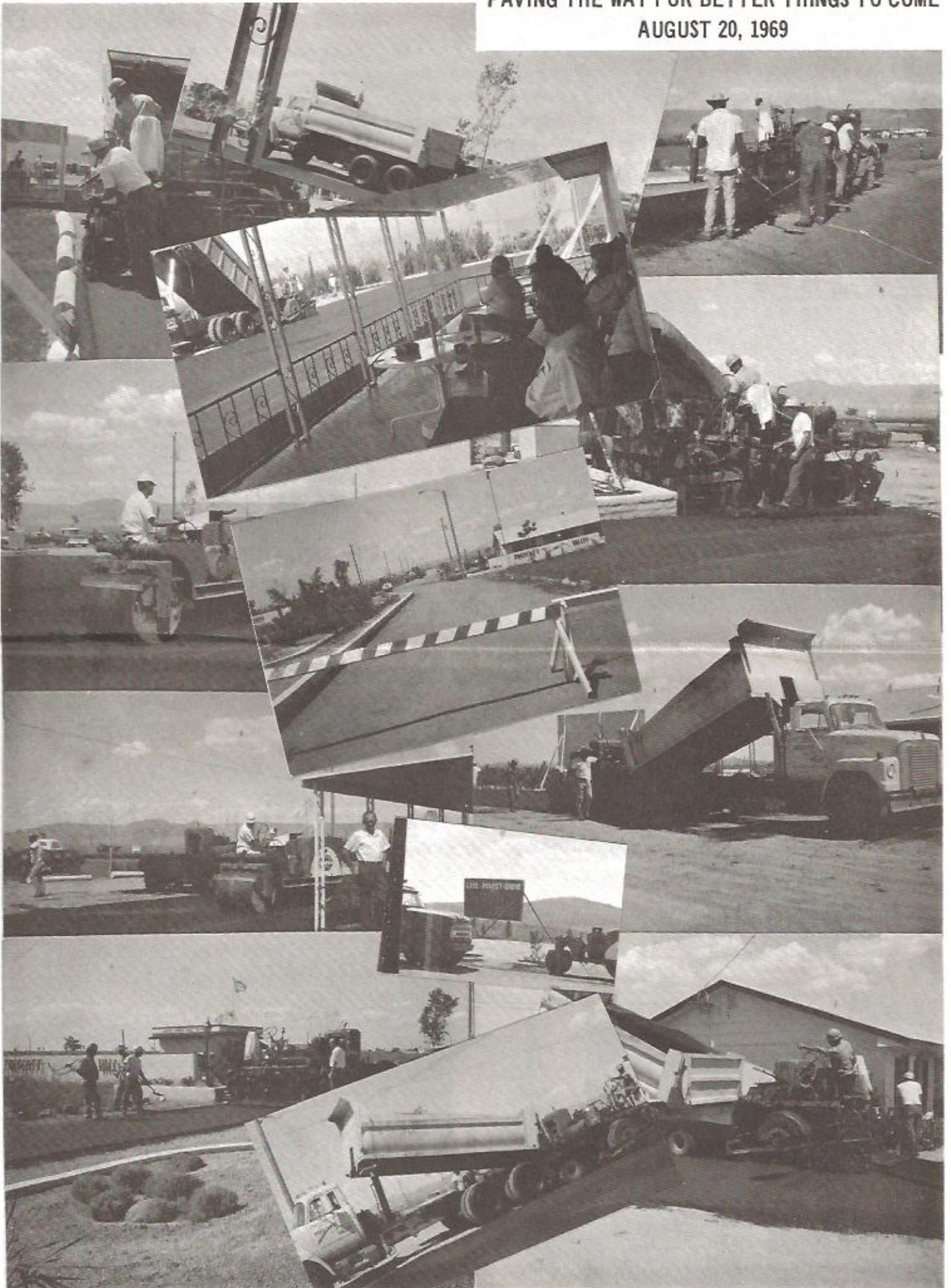


(Some important excerpts from a recent issue of Real Estate Trends)

Nearly half the homes built in '69 will be designed for indoor-outdoor living, according to a spokesman for a national building materials source. This trend, which originated in California, now has permeated every section of the country.

Homeseekers should not delay purchase, since current studies indicate a continued climb in price and increasing demand for the foreseeable future, John Cotton, president of the National Association of Real Estate Boards, said. A study of more than 100 boards of Realtors

PAVING THE WAY FOR BETTER THINGS TO COME
AUGUST 20, 1969



SUNSHINE SHIRLEY SEZ (con't.)

disclosed that sales volume was up 10.5% over a year ago. While signs point toward the continuation of elevated interest rates and high cost of materials and land during the next few months, the accelerating rate of increase in the value of homes, 7.4% compared with 3.8 and 1.6% in preceding years, offsets to a great degree these so-called adverse factors. Add to these facts the rapid rate of family formations, greater take home pay of many, and the mobility of the population as wage earners are transferred, and the wisdom of buying now -- not waiting for prices to drop-- is apparent.



IN THE MAIL

Would appreciate your sending the little newspaper to our new address. We do enjoy it so!

- Mrs. Harry Moore (Montana)

We enjoy the publication "Fringe Benefit" very much. Enjoy the news of the activities and the building of the Valley. - Mr. & Mrs. Kellerhals (Minnesota)

Thank you so very much for the little Fringe Benefit Magazine. We love every line of it . . . not just because we own lots there . . . and we like the weather, but we have children and grandchildren there. Every once in a while, we even see their pictures in the magazine. We can hardly wait for the next issue to come! Thanks again.

- Mr. & Mrs. B. Allen (Iowa)

We are receiving the Fringe Benefit. Enjoy reading it as it makes us feel a part of the Prescott Valley family.

- Mr. & Mrs. J. Field (Iowa)

(EDITOR'S NOTE:) And so you are! Keep those cards and letters coming in. We really enjoy hearing from you! Address all submissions to: The Fringe Benefit c/o Prescott Valley, Incorporated - 3550 N. Central Avenue - Suite 1300 - Phoenix, Arizona 85012.

ARIZONA'S

Prescott Valley

AN ESTABLISHED COMMUNITY

3550 N. CENTRAL AVE. SUITE 1300
PHOENIX, ARIZONA 85012
PHONE 264-9411

